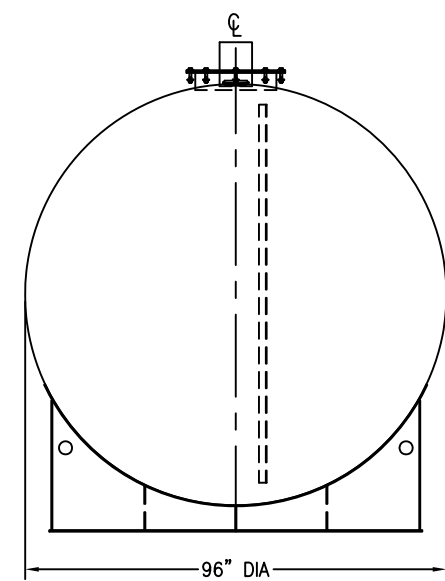
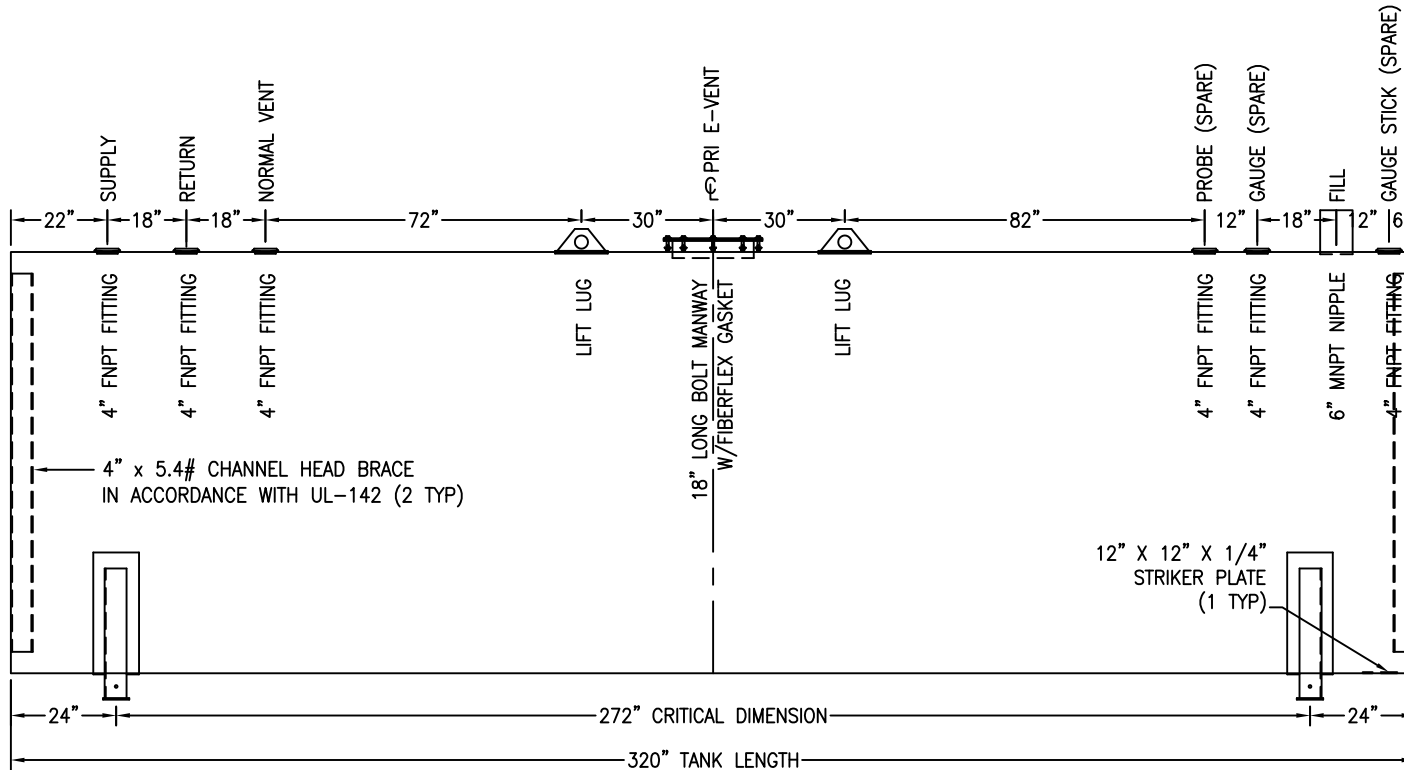


\*SADDLES ARE SEAL WELDED TO TANK



CUSTOMER APPROVAL SIGNATURE/DATE:

10,000 GALLON HORIZONTAL S/W ABOVE GROUND TANK

**SURFACE PREPARATION/COATING INFORMATION:**  
 INTERIOR SURFACES: N/A  
 EXTERIOR SURFACES: SSPC-SP-6 COMMERCIAL BLAST CLEAN  
 ONE COAT PRIMER

**MATERIAL /CONSTRUCTION/ LABELING INFORMATION:**  
 MATERIAL: CARBON STEEL ASTM A 36 OR A 569  
 MATERIAL THICKNESS: PRIMARY TANK SHELL AND HEADS: 1/4"  
 LABELING/MARKING: UNDERWRITERS LABORATORIES UL-142

CUSTOMER:  
 PROJECT:  
 AGENT:



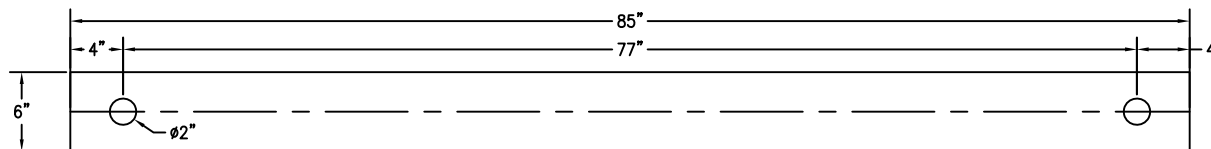
P.O. BOX 1279 GOLDSBORO, NC 27533  
 PHONE: (919)751-1791 FAX: (919)751-8186

DRAWING NUMBER: GIH10K96 REVISED 10/08

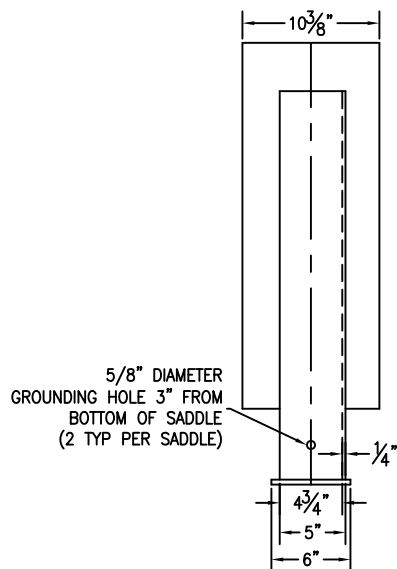
QUANTITY: ONE (1) REQUIRED  
 WEIGHT: 9,750 lbs ± 10%



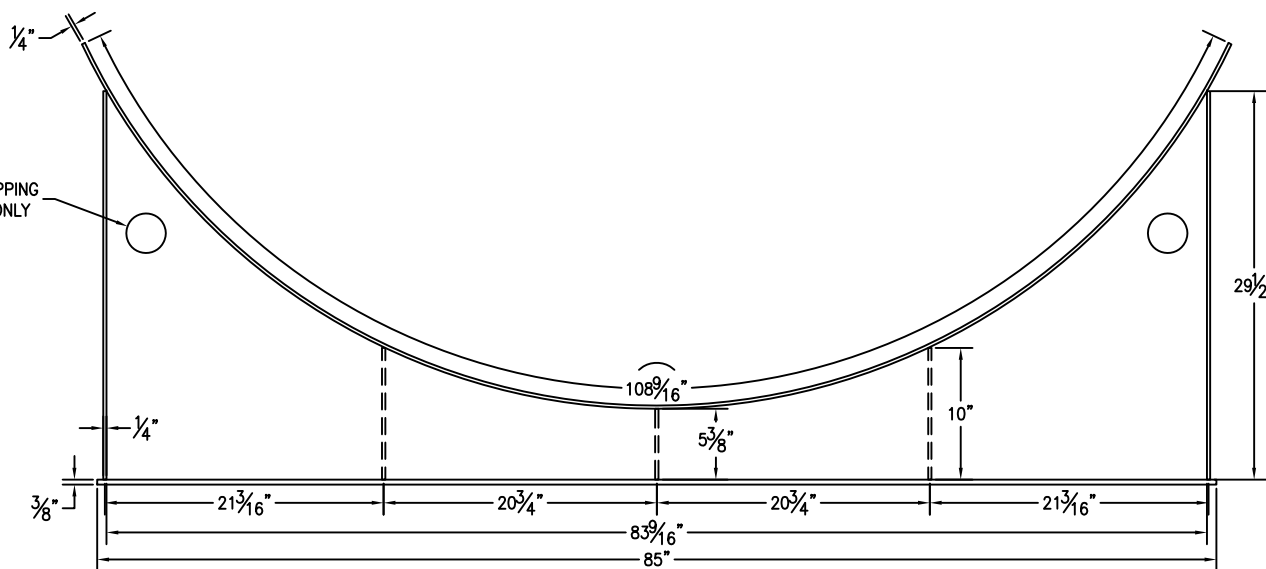
Underwriters  
Laboratories Inc.  
LISTED ®



BASE PLATE ANCHOR HOLE DETAIL



$\phi 3''$  FOR SHIPPING  
PURPOSES ONLY



CUSTOMER APPROVAL SIGNATURE/DATE:

10,000 GAL 6" TALL SADDLE FOR 96" DIAMETER TANK

SURFACE PREPARATION/COATING INFORMATION:  
 INTERIOR SURFACES: N/A  
 EXTERIOR SURFACES: SSPC-SP-6 COMMERCIAL BLAST CLEAN  
 ONE COAT PRIMER

MATERIAL /CONSTRUCTION/ LABELING INFORMATION:  
 MATERIAL: CARBON STEEL ASTM A 36 OR A 569

CUSTOMER:

PROJECT:

AGENT:



P.O. BOX 1279 GOLDSBORO, NC 27533  
 PHONE: (919)751-1791 FAX: (919)751-8186

DRAWING NUMBER: GI-S609610

REVISED 10/08

QUANTITY: TWO (2) REQUIRED  
 WEIGHT: 276 lb ± 10%