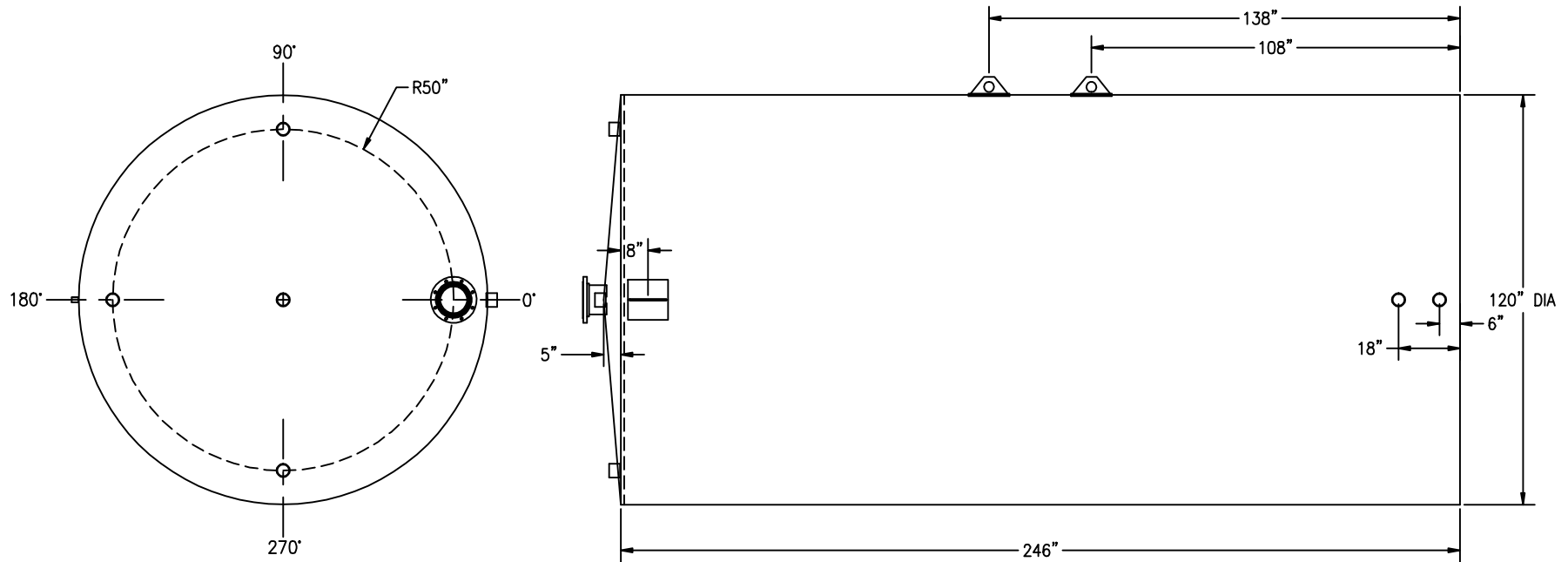


ANGLE:	LOCATION:	DESCRIPTION:	ANGLE:	LOCATION:	DESCRIPTION:
0°	SHELL, DOWN 8"	3/8" THICK ERECTION LUG w/ ROLLED REPAD	90°	TOP, 50" RADIUS	3" COUPLING
0°	SHELL, UP 6"	3" COUPLING	180°	SHELL, UP 2"	1" COUPLING
0°	SHELL, UP 18"	3" COUPLING	180°	SHELL, DOWN 8"	3/8" THICK ERECTION LUG w/ ROLLED REPAD
0°	TOP, 50" RADIUS	8" 150# RFSO FLANGE (EMERGENCY VENT)	180°	TOP, 50" RADIUS	3" COUPLING
90°	SHELL, UP 108"	3/8" THICK LIFT LUG w/ ROLLED REPAD	270°	TOP, 50" RADIUS	3" COUPLING
90°	SHELL, UP 138"	3/8" THICK LIFT LUG w/ ROLLED REPAD	N/A	TOP, CENTER	3" COUPLING (NORMAL VENT)



STANDARD LAP/OFFSET WELD CONSTRUCTION TO UL-142 STANDARDS AND SPECIFICATIONS
ALL BOLT HOLES TO STRADDLE MAJOR CENTERLINES OR THEIR PARALLELS



CUSTOMER APPROVAL SIGNATURE/DATE:

12,000 GALLON VERTICAL SW ABOVE GROUND TANK

CUSTOMER:

PROJECT:

AGENT:

SURFACE PREPARATION/COATING INFORMATION:

INTERIOR SURFACES:
N/A

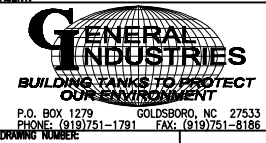
EXTERIOR SURFACES:
SSPC-SP-6 COMMERCIAL BLAST CLEAN
ONE COAT PRIMER
BLACK ASPHALTUM PAINT ON EXTERIOR BOTTOM

MATERIAL /CONSTRUCTION/ LABELING INFORMATION:

MATERIAL: CARBON STEEL (ASTM A 36, ASTM A 635 OR ASTM A 569)
MATERIAL THICKNESS: PRIMARY TANK: TOP: 7 GA SHELL: 7 GA BOTTOM: 1/4"

CONSTRUCTION IN ACCORDANCE WITH UNDERWRITERS LABORATORIES UL-142 STANDARDS FOR STEEL ABOVEGROUND TANKS FOR FLAMMABLE AND COMBUSTIBLE LIQUIDS

LABELING/MARKING: UNDERWRITERS LABORATORIES UL-142 / GENERAL INDUSTRIES NAMEPLATE



QUANTITY: ONE (1) REQUIRED
WEIGHT: 6,600 lbs ± 5%