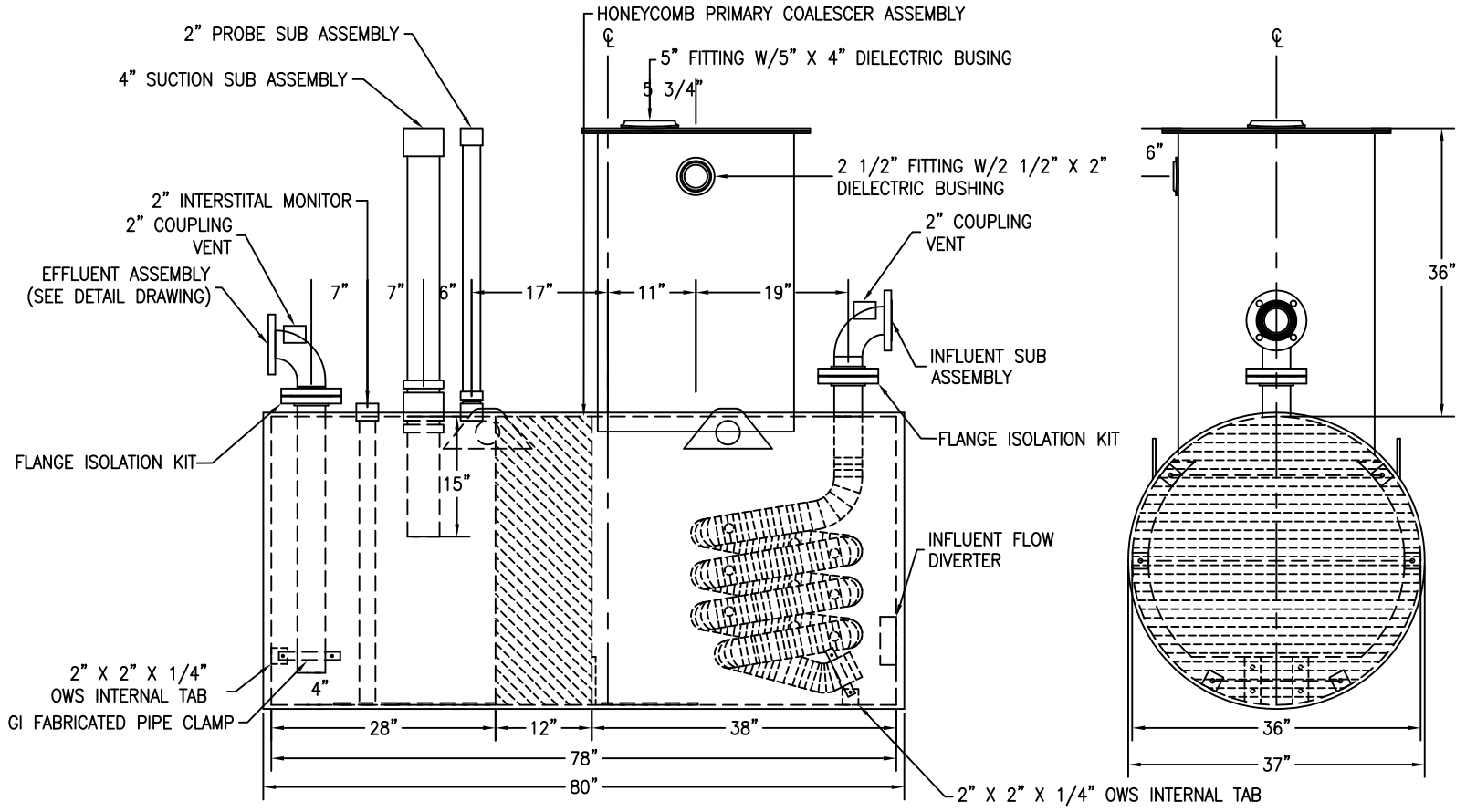


**NOTES:**

- 1) 1/4" THICK STRIKER PLATES INSTALLED ON THE TANK INTERIOR BOTTOM UNDER EACH OPENING IN ACCORDANCE WITH STEEL TANK INSTITUTE
- 2) ALL OPENINGS INSTALLED WITH DI-ELECTRIC BUSHINGS OR SPOOL FLANGES AND FLANGE ISOLATION KITS IN ACCORDANCE WITH STEEL TANK INSTITUTE
- 3) THIS TANK DESIGNED FOR MINIMUM BURIAL DEPTH OF 5 FEET (GRADE TO TOP OF TANK) WITH APPROVED BACKFILL MATERIAL \*\*\*\*\*



CUSTOMER APPROVAL SIGNATURE/DATE:

**300 GALLON ACT 100U D/W 15PPM OIL WATER SEPARATOR**

**SURFACE PREPARATION/COATING INFORMATION:**  
 INTERIOR SURFACES: N/A  
 EXTERIOR SURFACES: SSPC-SP-6 COMMERCIAL BLAST CLEAN  
 70 mils STEEL INSTITUTE APPROVED POLYURETHANE COATING

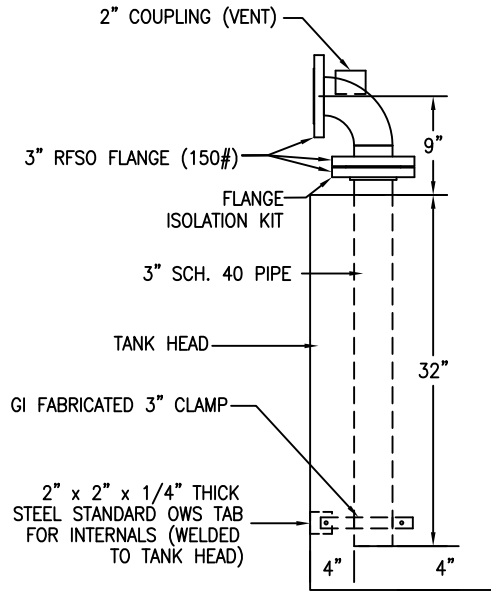
**MATERIAL /CONSTRUCTION/ LABELING INFORMATION:**  
 MATERIAL: CARBON STEEL ASTM A 36 OR ASTM A 569  
 MATERIAL THICKNESS: PRIMARY TANK: ROARK MINIMUM .123 PRIMARY HEADS: 10 GA  
 SECONDARY SHELL: 10 GA SECONDARY HEAD: 10 GA  
 LABELING/MARKING: UNDERWRITERS LABORATORIES UL-58/ STEEL TANK INSTITUTE  
 ACT100-U

CUSTOMER:  
 PROJECT:  
 AGENT:

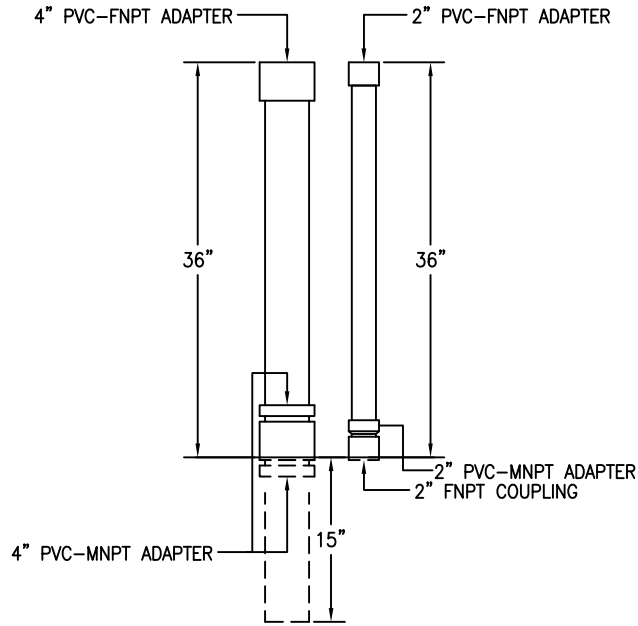
P.O. BOX 1279 GOLDSBORO, NC 27533  
 PHONE: (919)751-1791 FAX: (919)751-8186  
 DRAWING NUMBER: **GIDOWS300U15** REVISED 10/08

QUANTITY: ONE (1) REQUIRED  
 WEIGHT: 2,250 lbs ± 10%

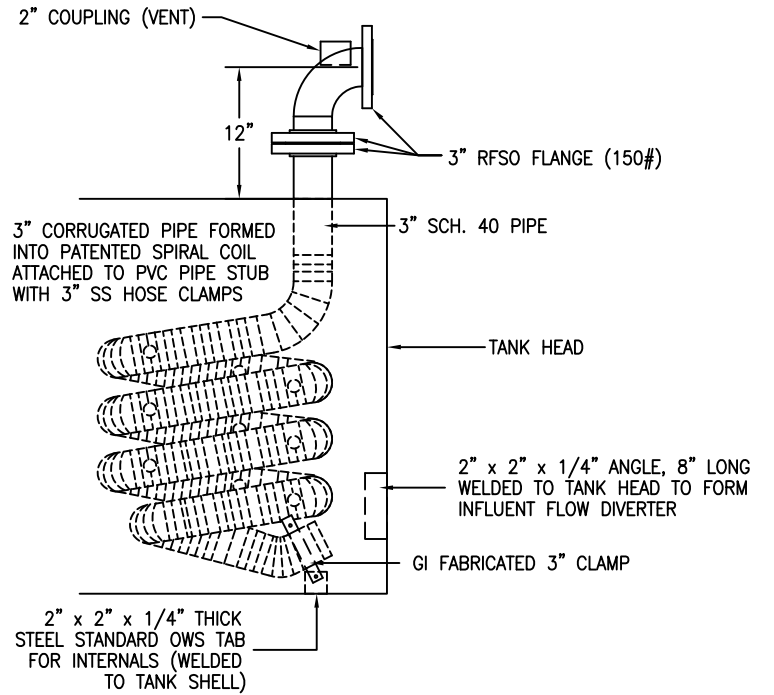
EFFLUENT ASSEMBLY



PROBE EXTENSION PIPE AND OIL SUCTION PIPE



INFLUENT ASSEMBLY




CUSTOMER APPROVAL SIGNATURE/DATE:

INFLUENT, EFFLUENT AND PROBE EXTENSION DETAILS

SURFACE PREPARATION/COATING INFORMATION:

MATERIAL /CONSTRUCTION/ LABELING INFORMATION:

CUSTOMER:  
PROJECT:  
AGENT:

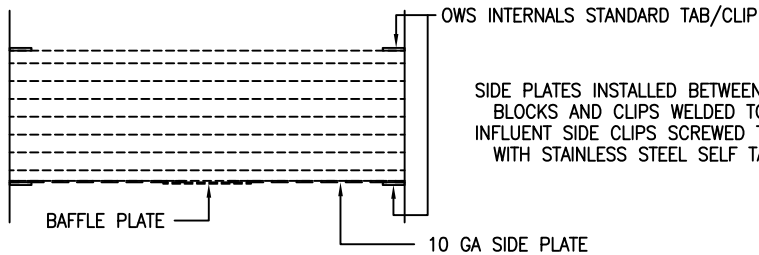


**GENERAL INDUSTRIES**  
BUILDING TANKS TO PROTECT OUR ENVIRONMENT

P.O. BOX 1279      GOLDSBORO, NC 27533  
PHONE: (919)751-1791      FAX: (919)751-8186

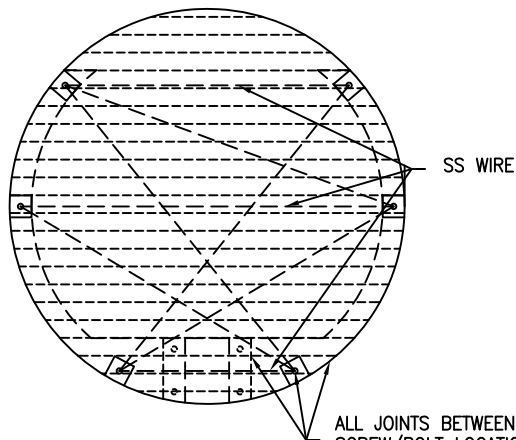
DRAWING NUMBER: **GIDOWS300U15**      REVISED 10/08

EFFLUENT SIDE CLIPS WELDED TO TANK SHELL SO  
 BACK OF BRENTWOOD INDUSTRIES ACCUPAC PVC PARALLEL  
 PLATE PACK "BLOCKS" ARE AT THE TANK CENTERLINE.  
 STAINLESS STEEL WIRE BETWEEN EACH PAIR OF CLIPS

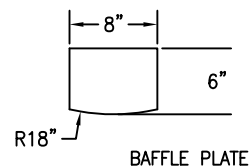
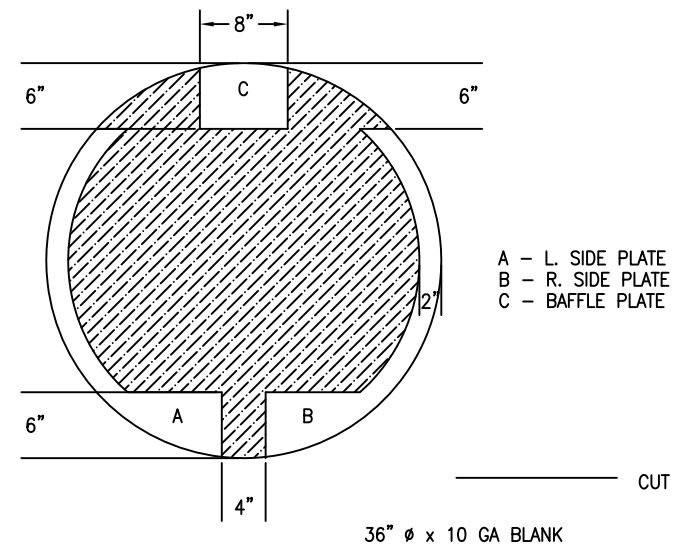
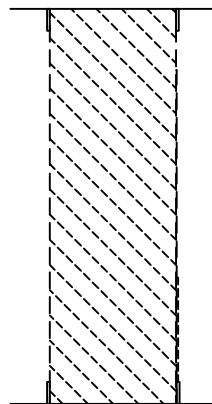


SIDE PLATES INSTALLED BETWEEN ACCUPACK  
 BLOCKS AND CLIPS WELDED TO TANK SHELL.  
 INFLUENT SIDE CLIPS SCREWED TO SIDE PLATES  
 WITH STAINLESS STEEL SELF TAPPING SCREWS.

6" TALL x 8" WIDE 10 GA BAFFLE  
 PLATE SCREWED TO SIDE PLATES WITH  
 STAINLESS STEEL SELF TAPPING SCREWS



ALL JOINTS BETWEEN PLATES AND SHELL AND ALL  
 SCREW/BOLT LOCATIONS TO HAVE HEAVY DUTY WATERPROOF  
 CHEMICAL RESISTANT CAULKING LIBERALLY APPLIED.



CUSTOMER APPROVAL SIGNATURE/DATE:

PARALLEL PLATE PACK COALESCER ASSEMBLY DETAILS

SURFACE PREPARATION/COATING INFORMATION:

MATERIAL /CONSTRUCTION/ LABELING INFORMATION:

CUSTOMER:  
 PROJECT:  
 AGENT:

P.O. BOX 1279 GOLDSBORO, NC 27533  
 PHONE: (919)751-1791 FAX: (919)751-8186  
 DRAWING NUMBER: **GIDOWS300U15** REVISED 10/08