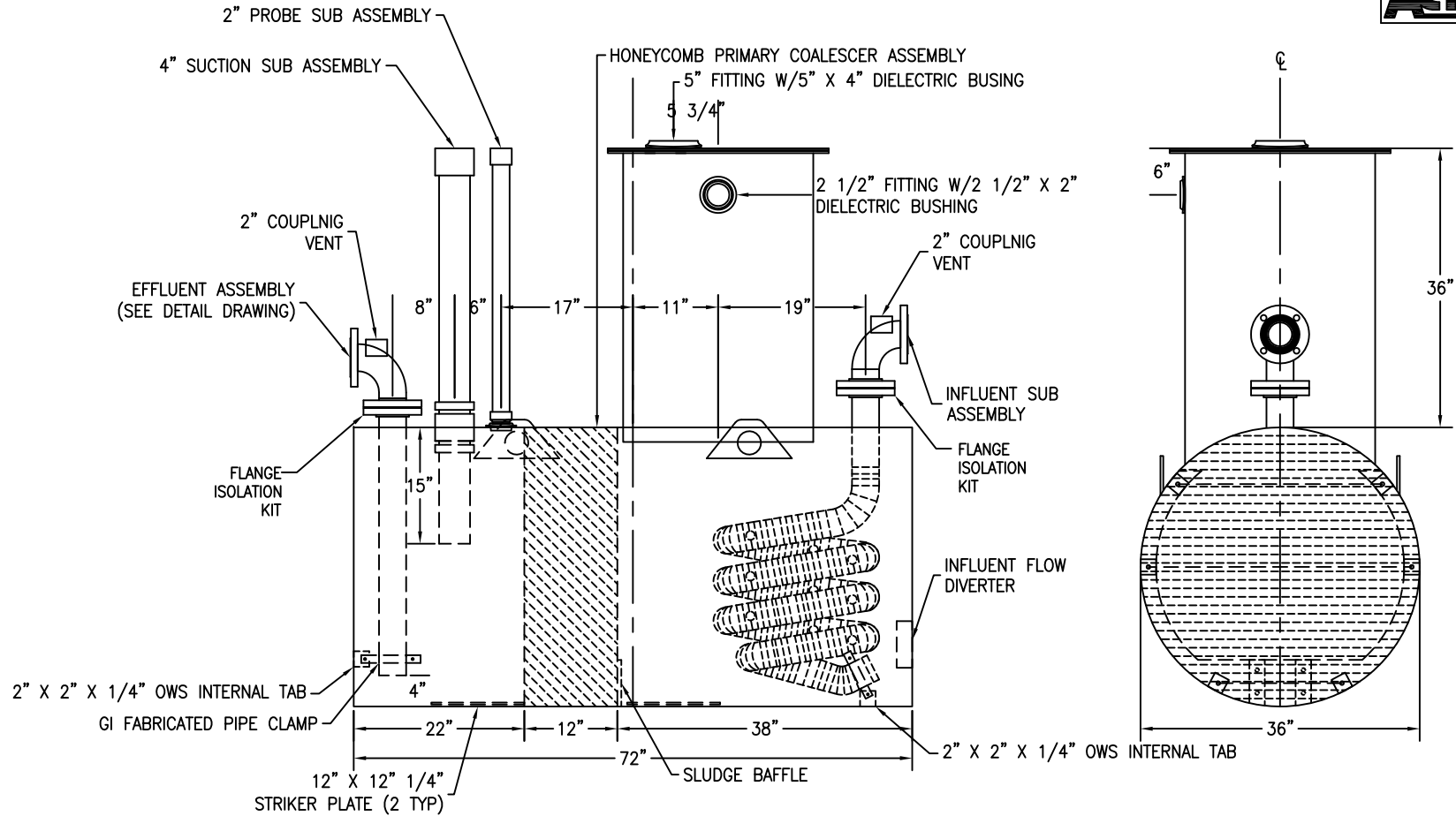


NOTES:

- 1) 1/4" THICK STRIKER PLATES INSTALLED ON THE TANK INTERIOR BOTTOM UNDER EACH OPENING IN ACCORDANCE WITH STEEL TANK INSTITUTE
- 2) ALL OPENINGS INSTALLED WITH DI-ELECTRIC BUSHINGS OR SPOOL FLANGES AND FLANGE ISOLATION KITS IN ACCORDANCE WITH STEEL TANK INSTITUTE
- 3) THIS TANK DESIGNED FOR MINIMUM BURIAL DEPTH OF 5 FEET (GRADE TO TOP OF TANK) WITH APPROVED BACKFILL MATERIAL *****



CUSTOMER APPROVAL SIGNATURE/DATE:

300 GALLON ACT-100U S/W 15 PPM OIL WATER SEPARATOR

SURFACE PREPARATION/COATING INFORMATION:
 INTERIOR SURFACES: N/A
 EXTERIOR SURFACES: SSPC-SP-6 COMMERCIAL BLAST CLEAN
 70 mils STEEL INSTITUTE APPROVED POLYURETHANE COATING

MATERIAL /CONSTRUCTION/ LABELING INFORMATION:
 MATERIAL: CARBON STEEL ASTM A 36 OR ASTM A 569
 MATERIAL THICKNESS: PRIMARY TANK: ROARK MIN. 0.1230
 PRIMARY HEADS: 10 GA

LABELING/MARKING: UNDERWRITERS LABORATORIES UL-58/ STEEL TANK INSTITUTE
 ACT100-U

CUSTOMER:
 PROJECT:
 AGENT:

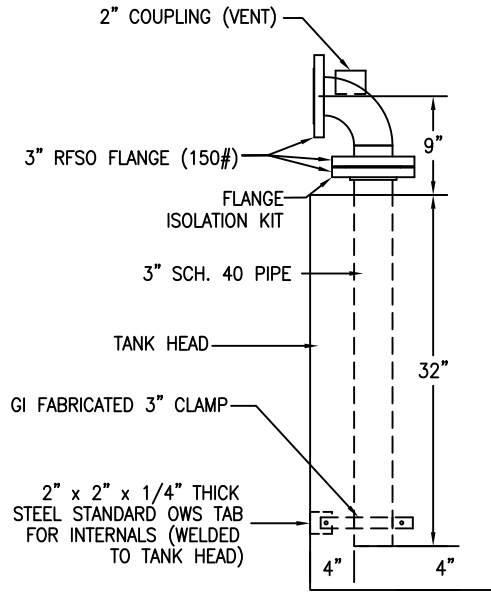


P.O. BOX 1279 GOLDSBORO, NC 27533
 PHONE: (919)751-1791 FAX: (919)751-8186

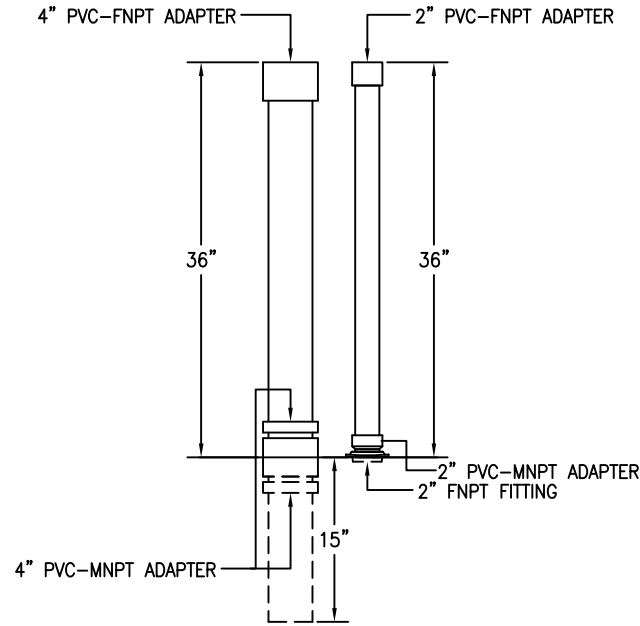
DRAWING NUMBER: G10WS300U15 REVISED 10/08

QUANTITY: ONE (1) REQUIRED
 WEIGHT: 1,750 lbs ± 10%

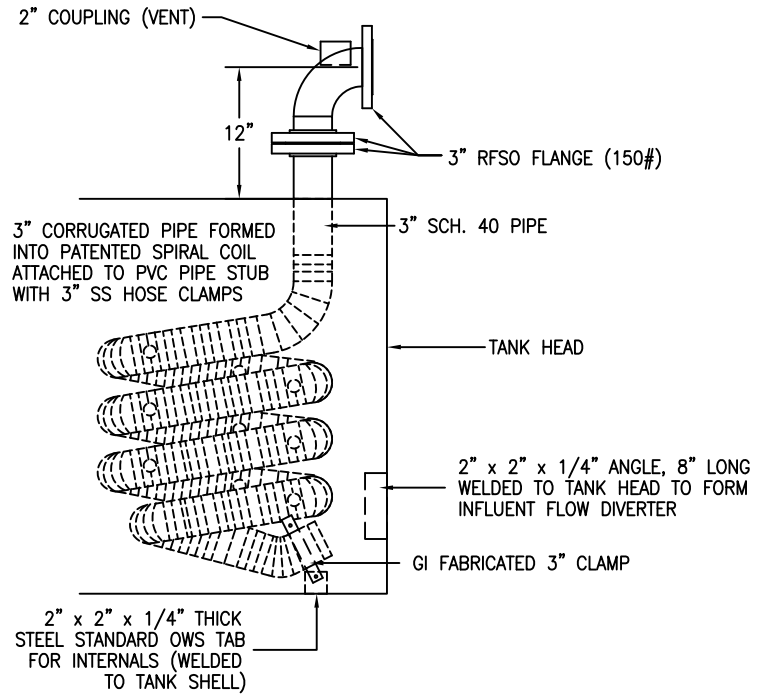
EFFLUENT ASSEMBLY



PROBE EXTENSION PIPE AND OIL SUCTION PIPE



INFLUENT ASSEMBLY



CUSTOMER APPROVAL SIGNATURE/DATE:

INFLUENT, EFFLUENT AND PROBE EXTENSION DETAILS

SURFACE PREPARATION/COATING INFORMATION:

MATERIAL /CONSTRUCTION/ LABELING INFORMATION:

CUSTOMER:

PROJECT:

AGENT:



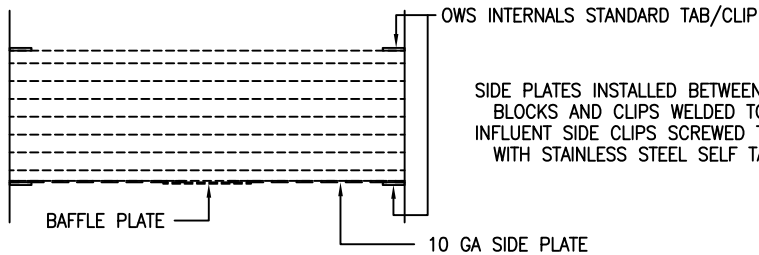
P.O. BOX 1279 GOLDSBORO, NC 27533
PHONE: (919)751-1791 FAX: (919)751-8186

DRAWING NUMBER:

GIOWS300U15

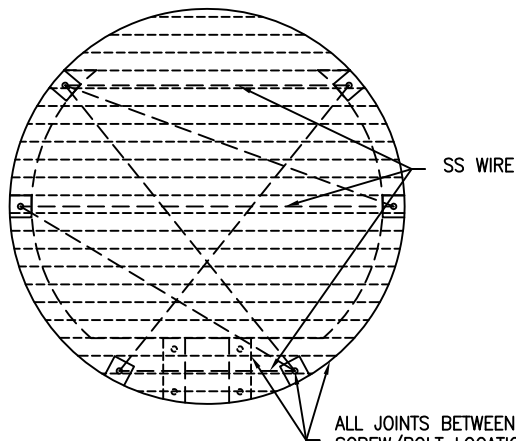
REVISED 10/08

EFFLUENT SIDE CLIPS WELDED TO TANK SHELL SO
 BACK OF BRENTWOOD INDUSTRIES ACCUPAC PVC PARALLEL
 PLATE PACK "BLOCKS" ARE AT THE TANK CENTERLINE.
 STAINLESS STEEL WIRE BETWEEN EACH PAIR OF CLIPS

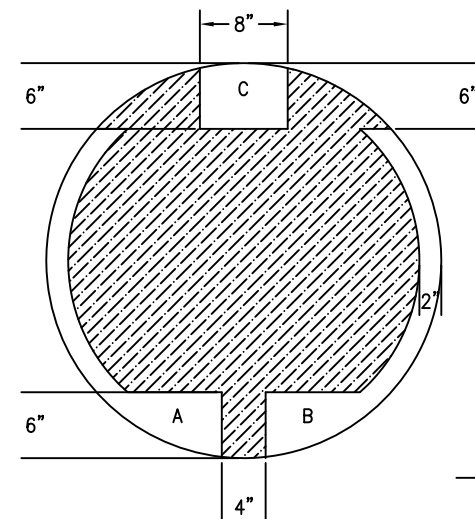
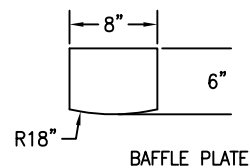
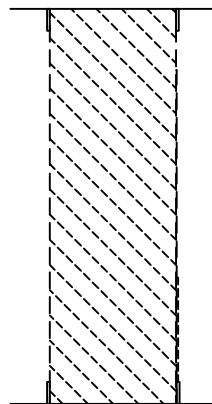


SIDE PLATES INSTALLED BETWEEN ACCUPACK
 BLOCKS AND CLIPS WELDED TO TANK SHELL.
 INFLUENT SIDE CLIPS SCREWED TO SIDE PLATES
 WITH STAINLESS STEEL SELF TAPPING SCREWS.

6" TALL x 8" WIDE 10 GA BAFFLE
 PLATE SCREWED TO SIDE PLATES WITH
 STAINLESS STEEL SELF TAPPING SCREWS



ALL JOINTS BETWEEN PLATES AND SHELL AND ALL
 SCREW/BOLT LOCATIONS TO HAVE HEAVY DUTY WATERPROOF
 CHEMICAL RESISTANT CAULKING LIBERALLY APPLIED.



A - L. SIDE PLATE
 B - R. SIDE PLATE
 C - BAFFLE PLATE

36" ϕ x 10 GA BLANK

CUSTOMER APPROVAL SIGNATURE/DATE:

PARALLEL PLATE PACK COALESCER ASSEMBLY DETAILS

SURFACE PREPARATION/COATING INFORMATION:

MATERIAL /CONSTRUCTION/ LABELING INFORMATION:

CUSTOMER:
 PROJECT:
 AGENT:

P.O. BOX 1279 GOLDSBORO, NC 27533
 PHONE: (919)751-1791 FAX: (919)751-8186

DRAWING NUMBER: **G1OWS300U15** REVISED 10/08