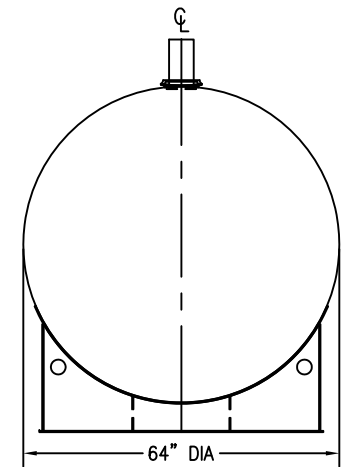
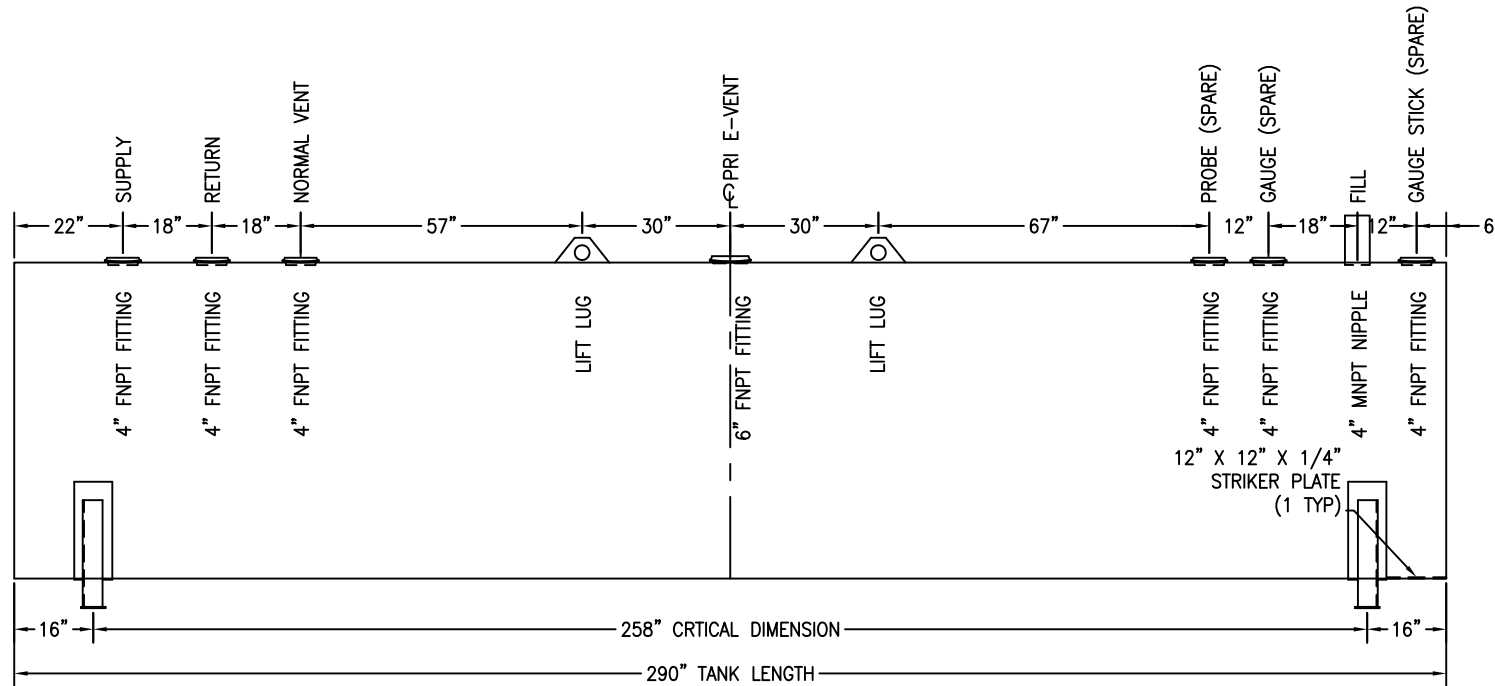


\*SADDLES ARE SEAL WELDED TO TANK



CUSTOMER APPROVAL SIGNATURE/DATE:

4,000 GALLON HORIZONTAL S/W ABOVE GROUND TANK

**SURFACE PREPARATION/COATING INFORMATION:**

INTERIOR SURFACES: N/A  
 EXTERIOR SURFACES: SSPC-SP-6 COMMERCIAL BLAST CLEAN  
 ONE COAT PRIMER

**MATERIAL /CONSTRUCTION/ LABELING INFORMATION:**

MATERIAL: CARBON STEEL ASTM A 36 OR A 569  
 MATERIAL THICKNESS: PRIMARY TANK SHELL AND HEADS: 7 GA

LABELING/MARKING: UNDERWRITERS LABORATORIES UL-142

CUSTOMER:

PROJECT:

AGENT:

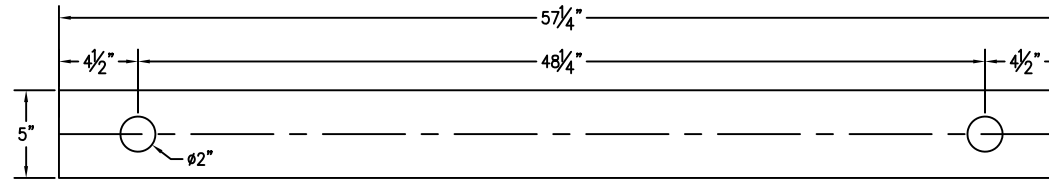


P.O. BOX 1279 GOLDSBORO, NC 27533  
 PHONE: (919)751-1791 FAX: (919)751-8186

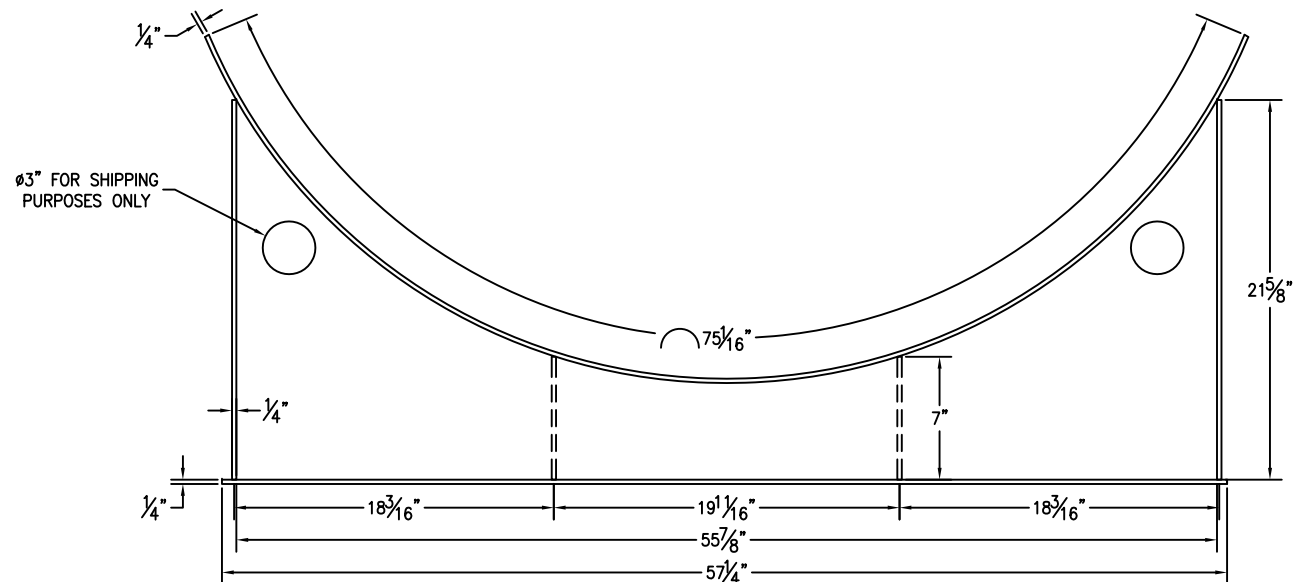
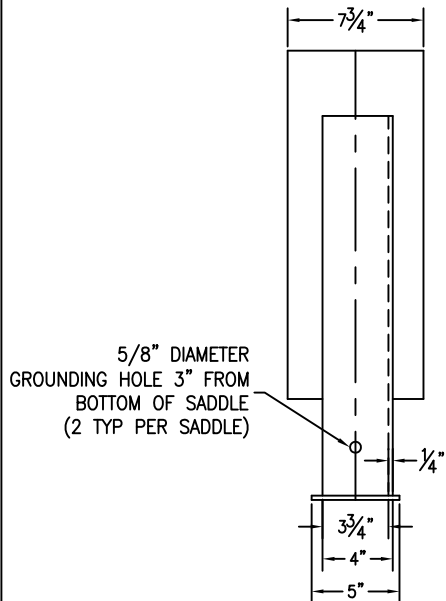
DRAWING NUMBER: GIH04K64

REVISED 10-08

QUANTITY: ONE (1) REQUIRED  
 WEIGHT: 4,750 lbs ± 10%



BASE PLATE ANCHOR HOLE DETAIL



CUSTOMER APPROVAL SIGNATURE/DATE:

4,000 GAL 6" TALL SADDLE FOR 64" DIAMETER TANK

SURFACE PREPARATION/COATING INFORMATION:  
 INTERIOR SURFACES: N/A  
 EXTERIOR SURFACES: SSPC-SP-6 COMMERCIAL BLAST CLEAN  
 ONE COAT PRIMER

MATERIAL /CONSTRUCTION/ LABELING INFORMATION:  
 MATERIAL: CARBON STEEL ASTM A 36 OR A 569

CUSTOMER:  
 PROJECT:  
 AGENT:



P.O. BOX 1279 GOLDSBORO, NC 27533  
 PHONE: (919)751-1791 FAX: (919)751-8186

DRAWING NUMBER: GI-S606404 REVISED 10-08

QUANTITY: TWO (2) REQUIRED  
 WEIGHT: 140 lb ea ±10%