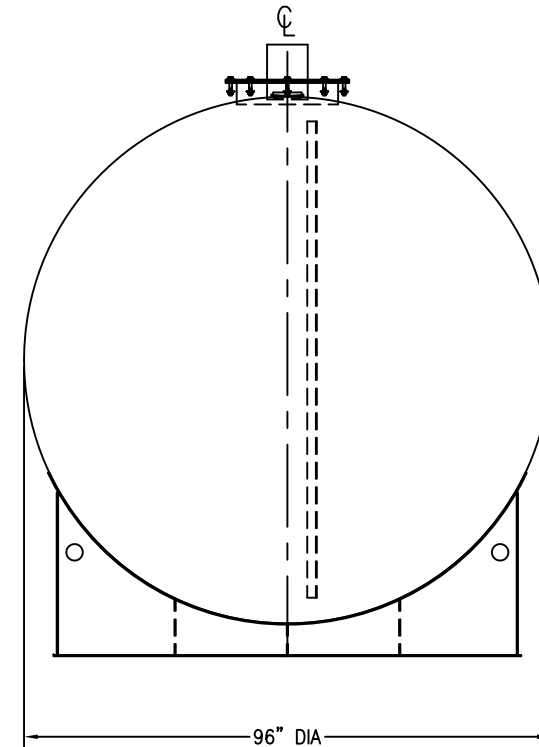
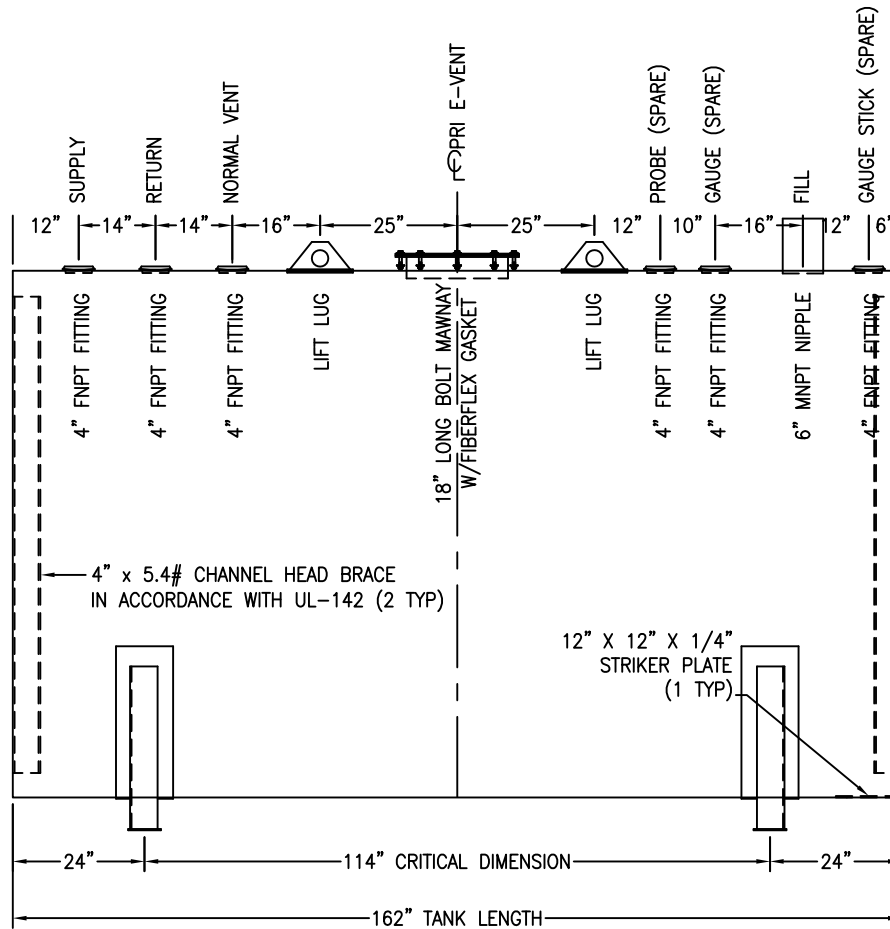


\*SADDLES ARE SEAL WELDED TO TANK



CUSTOMER APPROVAL SIGNATURE/DATE:

5,000 GALLON HORIZONTAL S/W ABOVE GROUND TANK

**SURFACE PREPARATION/COATING INFORMATION:**  
 INTERIOR SURFACES: N/A  
 EXTERIOR SURFACES: SSPC-SP-6 COMMERCIAL BLAST CLEAN  
 ONE COAT PRIMER

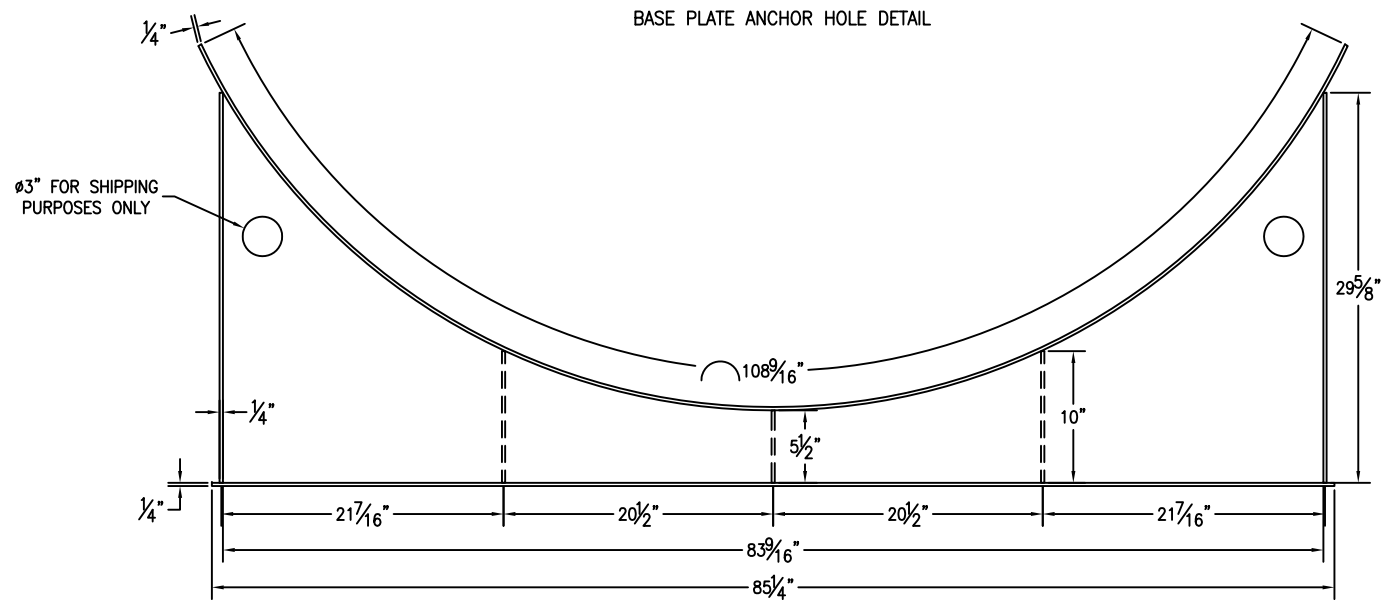
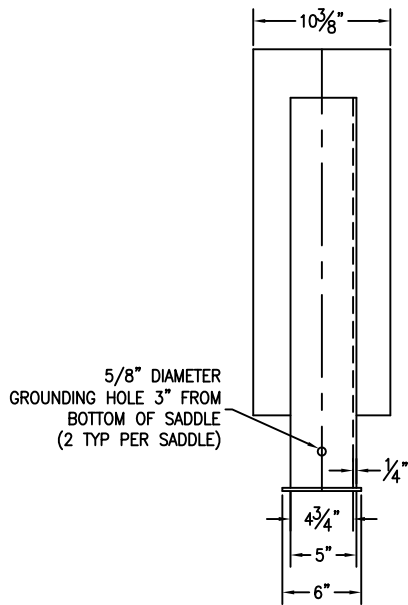
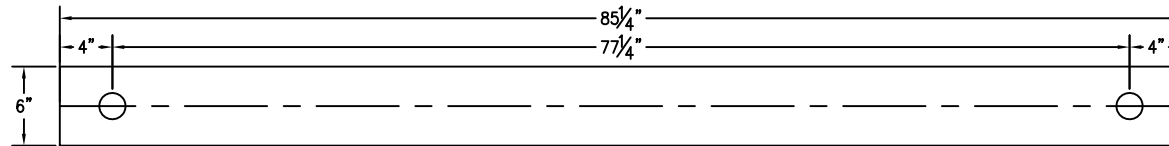
**MATERIAL /CONSTRUCTION/ LABELING INFORMATION:**  
 MATERIAL: CARBON STEEL ASTM A 36 OR A 569  
 MATERIAL THICKNESS: PRIMARY TANK SHELL AND HEADS: 1/4"

QUANTITY: ONE (1) REQUIRED  
 WEIGHT: 6,250 lbs ± 10%

LABELING/MARKING: UNDERWRITERS LABORATORIES UL-142

CUSTOMER:  
 PROJECT:  
 AGENT:

P.O. BOX 1279 GOLDSBORO, NC 27533  
 PHONE: (919)751-1791 FAX: (919)751-8186  
 DRAWING NUMBER: GIH05K96 REVISED 10/08




CUSTOMER APPROVAL SIGNATURE/DATE:

5,000 GAL 6" TALL SADDLE FOR 96" DIAMETER TANK

SURFACE PREPARATION/COATING INFORMATION:  
 INTERIOR SURFACES: N/A  
 EXTERIOR SURFACES: SSPC-SP-6 COMMERCIAL BLAST CLEAN  
 ONE COAT PRIMER

MATERIAL /CONSTRUCTION/ LABELING INFORMATION:  
 MATERIAL: CARBON STEEL ASTM A 36 OR A 569

CUSTOMER:  
 PROJECT:  
 AGENT:



P.O. BOX 1279 GOLDSBORO, NC 27533  
 PHONE: (919)751-1791 FAX: (919)751-8186  
 DRAWING NUMBER: GI-S609605 REVISED 10/08

QUANTITY: TWO (2) REQUIRED  
 WEIGHT: 257 lb ± 10%