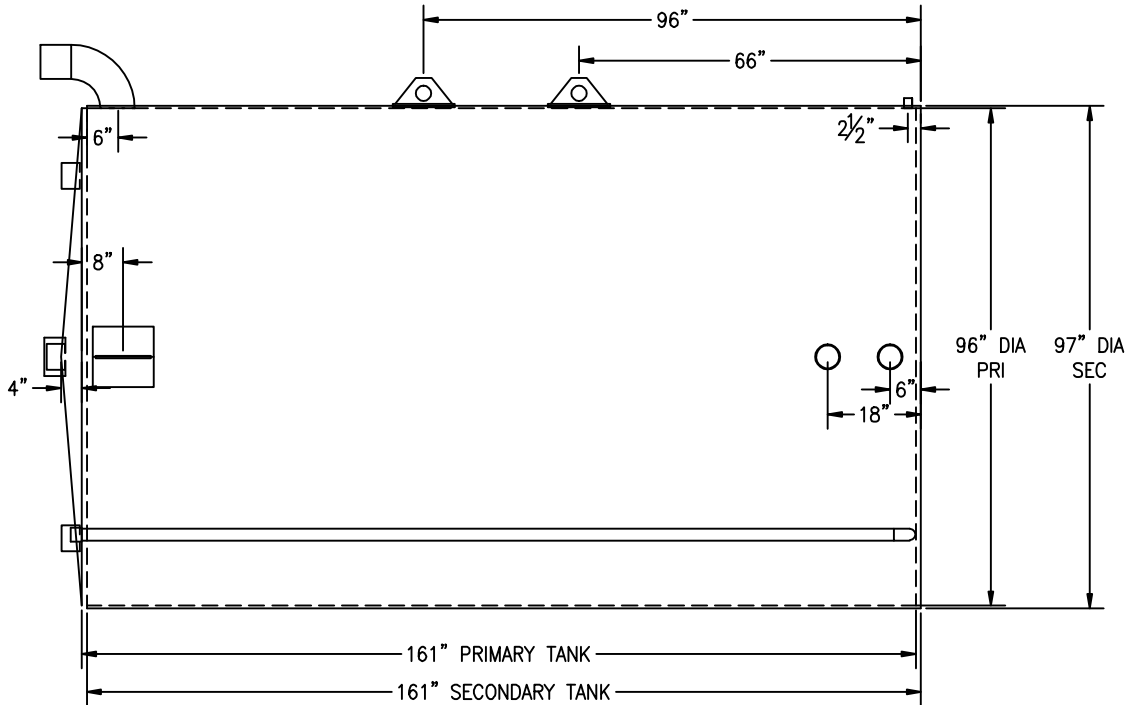
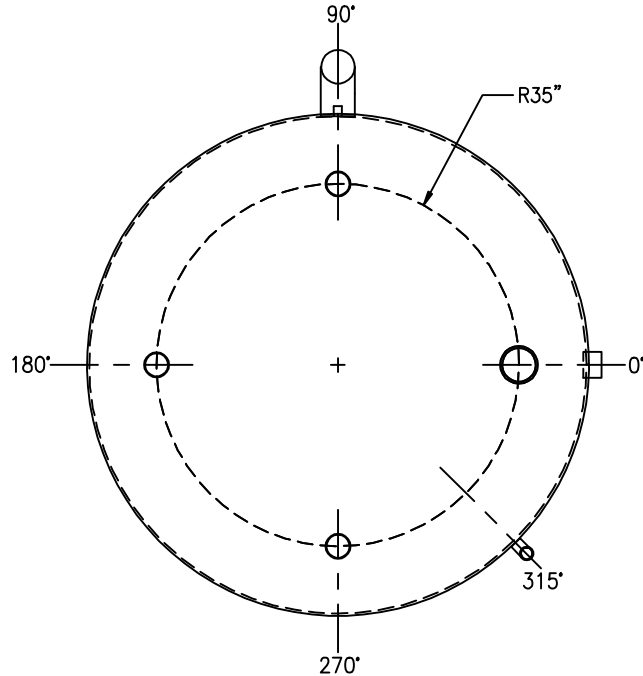




| ANGLE: | LOCATION: | DESCRIPTION: | ANGLE: | LOCATION: | DESCRIPTION: |
|--------|------------------|---|--------|-----------------|--|
| 0° | SHELL, DOWN 8" | 3/8" THICK ERECTION LUG w/ ROLLED REPAD | 90° | SHELL, DOWN 6" | 6" VERTICAL E-VENT |
| 0° | SHELL, UP 6" | 4" COUPLING | 90° | TOP, 35" RADIUS | 4" COUPLING |
| 0° | SHELL, UP 18" | 4" COUPLING | 180° | SHELL, DOWN 8" | 3/8" THICK ERECTION LUG w/ ROLLED REPAD |
| 0° | TOP, 35" RADIUS | 6" COUPLING | 180° | TOP, 35" RADIUS | 4" COUPLING |
| 90° | SHELL, UP 2 1/2" | 1" COUPLING | 270° | TOP, 35" RADIUS | 4" COUPLING |
| 90° | SHELL, UP 66" | 3/8" THICK LIFT LUG w/ ROLLED REPAD | 315° | SHELL | 2" FNPT COUPLING W/PIPE (INTERSTICE MONITOR) |
| 90° | SHELL, UP 96" | 3/8" THICK LIFT LUG w/ ROLLED REPAD | | | |

STANDARD LAP/OFFSET WELD CONSTRUCTION TO UL-142 STANDARDS AND SPECIFICATIONS
 ALL BOLT HOLES TO STRADDLE MAJOR CENTERLINES OR THEIR PARALLELS



CUSTOMER APPROVAL SIGNATURE/DATE:

5,000 GALLON VERTICAL D/W ABOVE GROUND TANK

SURFACE PREPARATION/COATING INFORMATION:

INTERIOR SURFACES:
 N/A
 EXTERIOR SURFACES:
 SSPC-SP-6 COMMERCIAL BLAST CLEAN
 ONE COAT PRIMER
 BLACK ASPHALTUM PAINT ON EXTERIOR BOTTOM

MATERIAL /CONSTRUCTION/ LABELING INFORMATION:

MATERIAL: CARBON STEEL (ASTM A 36, ASTM A 635 OR ASTM A 569)
 MATERIAL THICKNESS: PRIMARY TANK: TOP: 7 GA SHELL: 7 GA BOTTOM: 1/4"
 SECONDARY TANK: SHELL: 10 GA BOTTOM: 1/4"

CONSTRUCTION IN ACCORDANCE WITH UNDERWRITERS LABORATORIES UL-142 STANDARDS FOR STEEL ABOVEGROUND TANKS FOR FLAMMABLE AND COMBUSTIBLE LIQUIDS

LABELING/MARKING: UNDERWRITERS LABORATORIES UL-142 / GENERAL INDUSTRIES NAMEPLATE

CUSTOMER:

PROJECT:

AGENT:



P.O. BOX 1279 GOLDSBORO, NC 27533
 PHONE: (919)751-1791 FAX: (919)751-8186

DRAWING NUMBER:

QUANTITY: ONE (1) REQUIRED
 WEIGHT: 6,400 lbs ± 5%