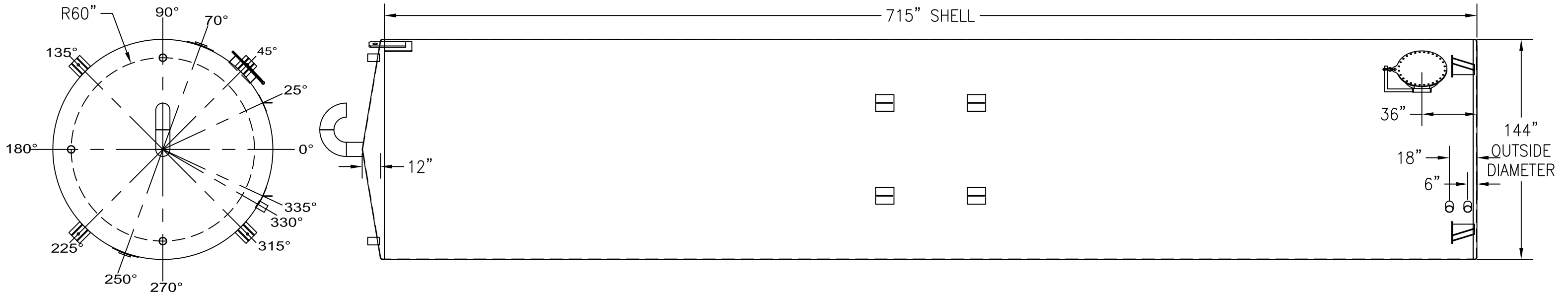


ANGLE:	LOCATION:	DESCRIPTION:	ANGLE:	LOCATION:	DESCRIPTION:
25°	SHELL, TBD	LIFTING LUG W/REPAD	250°	SHELL, DOWN 9"	ERECTION LUG W/REPAD
25°	SHELL, TBD	LIFTING LUG W/REPAD	270°	TOP, 51" RADIUS	4" MNPT NIPPLE
45°	BOTTOM	ANCHOR CHAIR	315°	BOTTOM	ANCHOR CHAIR
45°	SHELL, UP 36"	24" SHELL MANWAY W/DAVIT ARM	335°	SHELL, TBD	LIFTING LUG W/REPAD
70°	SHELL, DOWN 9"	ERECTION LUG W/REPAD	335°	SHELL, TBD	LIFTING LUG W/REPAD
90°	TOP, 60" RADIUS	4" MNPT NIPPLE	330°	SHELL, UP 6"	4" MNPT NIPPLE
135°	BOTTOM	ANCHOR CHAIR	330°	SHELL, UP 18"	4" MNPT NIPPLE
180°	TOP, 60" RADIUS	4" MNPT NIPPLE	N/A	TOP, CENTER	10" GOOSENECK VENT
225°	BOTTOM	ANCHOR CHAIR			

**ALL WELDS DOUBLE BUTT
W/FULL PENETRATION**

ALL BOLT HOLES TO STRADDLE MAJOR CENTERLINES OR THEIR PARALLELS



CUSTOMER APPROVAL SIGNATURE/DATE:

50,000 GALLON VERTICAL S/W ABOVE GROUND POTABLE WATER STORAGE TANK

SURFACE PREPARATION/COATING INFORMATION:

INTERIOR SURFACES: SSPC-SP-10 NEAR WHITE BLAST
TWO COATS EPOXY

EXTERIOR SURFACES:
SSPC-SP-6 COMMERCIAL BLAST CLEAN
ONE COAT WHITE URETHANE

MATERIAL /CONSTRUCTION/ LABELING INFORMATION:

MATERIAL: CARBON STEEL ASTM A 36 OR ASTM A 569
MATERIAL THICKNESS: TANK TOP: 1/4" SHELL: 1/4" BOTTOM: 1/4"

LABELING/MARKING:

CUSTOMER:

PROJECT:

AGENT:



P.O. BOX 1279 GOLDSBORO, NC 27533
PHONE: (919)751-1791 FAX: (919)751-8186

DRAWING NUMBER:
GIWV-PW-50144

11/2014

QUANTITY: ONE (1) REQUIRED
WEIGHT: 27,500 lbs ± 10%